



PRESS SYSTEM

PRESS FITTINGS FOR MULTILAYER PIPE



TYPE OF PRODUCT

Brass press fittings

FUNCTION

Fittings for sanitary water supply system
Fittings for heating systems

SYSTEM

The Comisa Press EVO fittings form, alongside the Comisa multilayer pipe, the Comisa Press system. The compatibility of the fittings with multilayer pipes manufactured by others or of different type must be expressly approved by Comisa S.p.A. which, after executing its tests protocol, shall issue a guarantee certificate.

INSTRUCTIONS FOR USE

Use TH-profile pressing clamps with dimension suitable for the size of the fitting to be installed. Please follow the instructions provided by Comisa S.p.A strictly.

PERFORMANCE

Maximum operating pressure	10 bars
Maximum operating temperature	95° C
Maximum peak temperature	110° C (1 hr)

Data refers to the Comisa Press system combined with Comisa multilayer pipe

PRESS CONTROL

Press test to identify possible fittings not suitably pressurised to a maximum of 4.5 bars.

WARRANTY

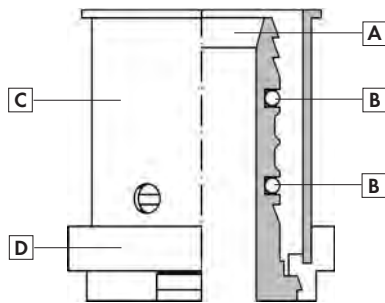
10 years in compliance with the law. Such warranty shall not be deemed valid in case:

- Installation is not carried out according to the installation instructions indicated in the Comisa S.p.A. publications
- The circuit is used for conveying liquids different from those indicated in the Comisa S.p.A. publications
- Liquids are introduced into the circuit at pressure and temperature values different from the respective restrictions indicated in the Comisa S.p.A. publications

CERTIFICATES

The Comisa Press system is certified by DVGW (n. DW-8501BO0049)

MATERIALS



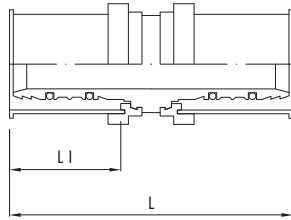
- A) **Body:** EN 12165 CW617N brass suitable for the passage of nutritional liquids intended for human consumption
- B) **O-Ring:** 2 O.R.made with EPDM-peroxide blend
- C) **Collar:** AISI 304 DIN EN 10088-2 stainless steel subjected to a solubilisation process
- D) **Clip ring:** made of PE-LD low density polyethylene. The profile of the clip further provides an accurate abutment for the TH clamp

TABLE FOR CALCULATING LOCALISED FRICTION LOSSES (EXPRESSED IN EQUIVALENT PIPE METRES) EQUIVALENT LENGTHS

Pipe Size	90° Elbow	90° Tee (Flow in)	90° Tee (Flow out)	90° Tee (Flow through)	90° Tee (Flow opposite)	Straight Pipe	90° Tee (Flow out)
∅ 16 x 2,0	0,80	0,70	0,60	1,40	1,80	0,35	0,80
∅ 18 x 2,0	1,00	0,90	0,80	1,60	2,10	0,45	1,00
∅ 20 x 2,5	1,10	1,00	0,90	1,70	2,20	0,45	1,10
∅ 20 x 2,0	1,30	1,15	1,00	1,90	2,70	0,50	1,30
∅ 26 x 3,0	1,80	1,60	1,40	2,50	4,30	0,65	1,80
∅ 32 x 3,0	2,70	2,30	2,00	4,20	6,30	0,85	2,70
∅ 40 x 3,5	3,00	2,60	2,30	5,00	7,50	1,00	3,00
∅ 50 x 4,0	4,60	4,20	3,80	6,70	10,00	1,30	4,60



DIMENSIONS

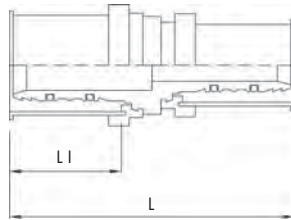


Size in mm	L	LI	Code
14 x 2	63	25	87.10.140
16 x 2	63	25	87.10.160
16 x 2,25	63	25	87.10.161
17 x 2	63	25	87.10.170
18 x 2	63	25	87.10.180
20 x 2	63	25	87.10.200
20 x 2,5	63	25	87.10.201
25 x 2,5	63	25	87.10.250
26 x 3	63	25	87.10.260
32 x 3	68	25	87.10.320
40 x 3,5	71	25	87.10.400
50 x 4	96	40	87.10.500
63 x 6	82	37	87.10.631

87.10



STRAIGHT COUPLING

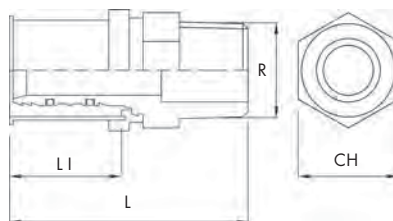


Size in mm	L	LI	Code
16 x 2 - 14 x 2	63	25	87.11.160
18 x 2 - 16 x 2	63	25	87.11.181
20 x 2 - 14 x 2	63	25	87.11.200
20 x 2 - 16 x 2	63	25	87.11.201
20 x 2 - 18 x 2	63	25	87.11.203
20 x 2,5 - 16 x 2	63	25	87.11.205
20 x 2,5 - 16 x 2,25	63	25	87.11.206
25 x 2,5 - 16 x 2	63	25	87.11.250
25 x 2,5 - 18 x 2	63	25	87.11.251
25 x 2,5 - 20 x 2	63	25	87.11.252
26 x 3 - 16 x 2	63	25	87.11.260
26 x 3 - 18 x 2	63	25	87.11.262
26 x 3 - 20 x 2	63	25	87.11.263
26 x 3 - 20 x 2,5	63	25	87.11.264
32 x 3 - 16 x 2	68	25	87.11.320
32 x 3 - 18 x 2	68	25	87.11.321
32 x 3 - 20 x 2	68	25	87.11.322
32 x 3 - 25 x 2,5	68	25	87.11.324
32 x 3 - 26 x 3	68	25	87.11.325
40 x 3,5 - 25 x 2,5	71	25	87.11.400
40 x 3,5 - 26 x 3	71	25	87.11.401
40 x 3,5 - 32 x 3	71	25	87.11.402
50 x 4 - 32 x 3	81	40 - 25	87.11.501
50 x 4 - 40 x 3,5	81	40 - 25	87.11.600
63 x 6 - 40 x 3,5	73	37 - 25	87.11.640
63 x 6 - 50 x 4	89	37 - 40	87.11.650

87.11



REDUCED STRAIGHT COUPLING



Size in mm	L	LI	R	CH	Code
14 x 2 - 1/2"	50	25	1/2"	22	87.12.140
16 x 2 - 1/2"	50	25	1/2"	22	87.12.160
16 x 2,25 - 1/2"	50	25	1/2"	22	87.12.161
18 x 2 - 1/2"	50	25	1/2"	22	87.12.180
18 x 2 - 3/4"	54	25	3/4"	27	87.12.181
20 x 2 - 1/2"	50	25	1/2"	22	87.12.200
20 x 2 - 3/4"	54	25	3/4"	27	87.12.201
20 x 2,5 - 1/2"	50	25	1/2"	22	87.12.202
20 x 2,5 - 3/4"	54	25	3/4"	27	87.12.203
25 x 2,5 - 3/4"	54	25	3/4"	37	87.12.250
25 x 2,5 - 1"	57	25	1"	34	87.12.251
26 x 3 - 1/2"	53	25	1/2"	27	87.12.255
26 x 3 - 3/4"	54	25	3/4"	27	87.12.260
26 x 3 - 1"	57	25	1"	34	87.12.261
32 x 3 - 1"	57	25	1"	34	87.12.320
32 x 3 - 1 1/4"	62	25	1 1/4"	43	87.12.321
40 x 3,5 - 1"	60	25	1"	43	87.12.400
40 x 3,5 - 1 1/4"	62	25	1 1/4"	43	87.12.401
50 x 4 - 1 1/4"	73	40	1 1/4"	50	87.12.500
50 x 4 - 1 1/2"	73	40	1 1/2"	50	87.12.501
63 x 6 - 2"	85	37	2"	60	87.12.631

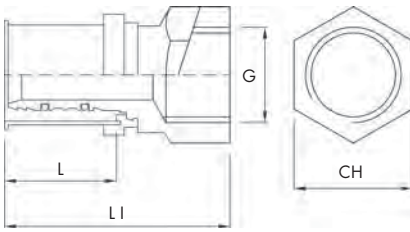
87.12



MALE STRAIGHT COUPLING



DIMENSIONS

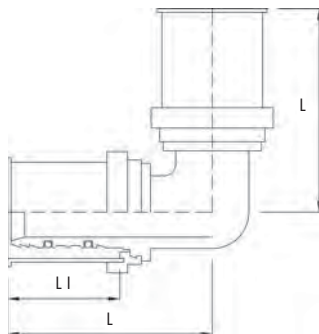


Size in mm	L	LI	G	CH	Code
14 x 2 - 1/2"	50	25	1/2"	25	87.13.140
16 x 2 - 1/2"	50	25	1/2"	25	87.13.160
16 x 2,25 - 1/2"	50	25	1/2"	25	87.13.161
18 x 2 - 1/2"	50	25	1/2"	25	87.13.180
18 x 2 - 3/4"	53	25	3/4"	30	87.13.181
20 x 2 - 1/2"	50	25	1/2"	25	87.13.200
20 x 2 - 3/4"	53	25	3/4"	30	87.13.201
20 x 2,5 - 1/2"	50	25	1/2"	25	87.13.202
20 x 2,5 - 3/4"	53	25	3/4"	30	87.13.203
25 x 2,5 - 3/4"	53	25	3/4"	30	87.13.250
25 x 2,5 - 1"	53	25	1"	38	87.13.251
26 x 3 - 3/4"	53	25	3/4"	30	87.13.260
26 x 3 - 1"	53	25	1"	38	87.13.261
32 x 3 - 1"	53	25	1"	38	87.13.320
32 x 3 - 1 1/4"	57	25	1 1/4"	50	87.13.321
40 x 3,5 - 1"	53	25	1"	43	87.13.400
40 x 3,5 - 1 1/4"	57	25	1 1/4"	50	87.13.401
40 x 3,5 - 1 1/2"	57	25	1 1/2"	50	87.13.405
50 x 4 - 1 1/4"	70	40	1 1/4"	50	87.13.500
50 x 4 - 1 1/2"	73	40	1 1/2"	50	87.13.501

87.13



FEMALE STRAIGHT COUPLING

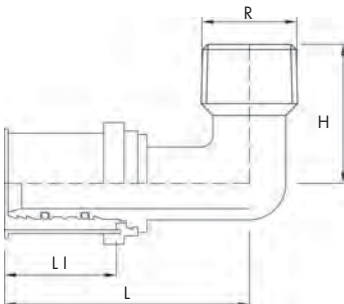


Size in mm	L	LI	Code
16 x 2	45	25	87.14.160
16 x 2,25	45	25	87.14.161
18 x 2	45	25	87.14.180
20 x 2	45	25	87.14.200
20 x 2,5	45	25	87.14.201
25 x 2,5	45	25	87.14.250
26 x 3	48	25	87.14.260
32 x 3	52	25	87.14.320
40 x 3,5	56	25	87.14.340
50 x 4	76	40	87.14.350
63 x 6	83	37	87.14.631

87.14



90° ELBOW

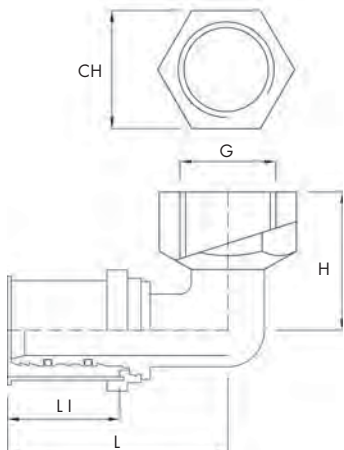


Size in mm	L	LI	H	R	Code
14 x 2 - 1/2"	54	25	31	1/2"	87.16.140
16 x 2 - 1/2"	47	25	29	1/2"	87.16.160
16 x 2,25 - 1/2"	47	25	29	1/2"	87.16.161
18 x 2 - 1/2"	54	25	31	1/2"	87.16.180
20 x 2 - 1/2"	54	25	31	1/2"	87.16.200
20 x 2 - 3/4"	49	25	34	3/4"	87.16.201
20 x 2,5 - 1/2"	54	25	31	1/2"	87.16.202
20 x 2,5 - 3/4"	49	25	34	3/4"	87.16.203
25 x 2,5 - 3/4"	49	25	39	3/4"	87.16.250
26 x 3 - 3/4"	49	25	39	3/4"	87.16.260
32 x 3 - 1"	52	25	43	1"	87.16.320
40 x 3,5 - 1 1/4"	55	25	54	1 1/4"	87.16.400
50 x 4 - 1 1/4"	76	40	61	1 1/4"	87.16.500
50 x 4 - 1 1/2"	76	40	61	1 1/2"	87.16.501

87.16



90° MALE ELBOW COUPLING



Size in mm	L	LI	H	G	CH	Code
14 x 2 - 1/2"	47	25	25	1/2"	25	87.17.140
16 x 2 - 1/2"	54	25	33	1/2"	\	87.17.159
16 x 2 - 1/2"	47	25	25	1/2"	25	87.17.160
16 x 2,25 - 1/2"	47	25	25	1/2"	25	87.17.161
18 x 2 - 1/2"	48	25	26	1/2"	26	87.17.180
18 x 2 - 3/4"	49	25	34	3/4"	31	87.17.181
20 x 2 - 1/2"	48	25	26	1/2"	26	87.17.200
20 x 2 - 3/4"	49	25	34	3/4"	31	87.17.201
20 x 2,5 - 1/2"	48	25	26	1/2"	26	87.17.202
20 x 2,5 - 3/4"	49	25	34	3/4"	31	87.17.203
25 x 2,5 - 3/4"	49	25	42	3/4"	31	87.17.250
26 x 3 - 3/4"	49	25	42	3/4"	31	87.17.260
32 x 3 - 1"	52	25	45	1"	38	87.17.320
40 x 3,5 - 1 1/4"	56	25	55	1 1/4"	47	87.17.400
50 x 4 - 1 1/4"	76	40	63	1 1/4"	\	87.17.500
50 x 4 - 1 1/2"	76	40	63	1 1/2"	\	87.17.501

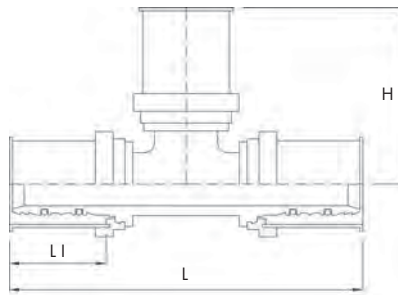
87.17



90° ELBOW



DIMENSIONS

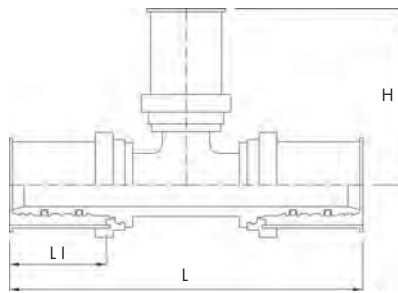


Size in mm	L	LI	H	Code
14 x 2	90	25	45	87.18.140
16 x 2	90	25	45	87.18.160
16 x 2,25	90	25	45	87.18.161
18 x 2	90	25	45	87.18.180
20 x 2	90	25	45	87.18.200
20 x 2,5	90	25	45	87.18.201
25 x 2,5	96	25	48	87.18.250
26 x 3	96	25	48	87.18.260
32 x 3	104	25	52	87.18.320
40 x 3,5	112	25	56	87.18.400
50 x 4	152	40	76	87.18.500
63 x 6	166	37	83	87.18.631

87.18



TEE COUPLING

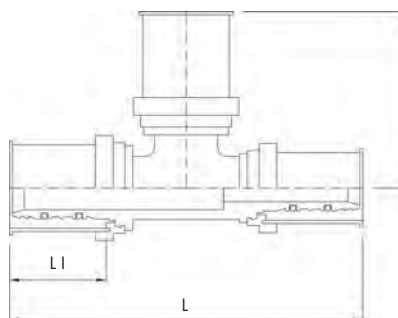


Size in mm	L	LI	H	Code
16 x 2 - 14 x 2 - 16 x 2	90	25	45	87.19.160
18 x 2 - 16 x 2 - 18 x 2	90	25	45	87.19.181
20 x 2 - 16 x 2 - 20 x 2	90	25	45	87.19.201
20 x 2 - 18 x 2 - 20 x 2	90	25	45	87.19.202
20 x 2,5 - 16 x 2 - 20 x 2,5	90	25	45	87.19.204
20 x 2,5 - 16 x 2,25 - 20 x 2,5	90	25	45	87.19.205
25 x 2,5 - 16 x 2 - 25 x 2,5	96	25	48	87.19.250
25 x 2,5 - 20 x 2 - 25 x 2,5	96	25	48	87.19.252
26 x 3 - 20 x 2,5 - 26 x 3	96	25	48	87.19.260
26 x 3 - 16 x 2 - 26 x 3	96	25	48	87.19.261
26 x 3 - 18 x 2 - 26 x 3	96	25	48	87.19.262
26 x 3 - 20 x 2 - 26 x 3	96	25	48	87.19.263
32 x 3 - 16 x 2 - 32 x 3	104	25	52	87.19.320
32 x 3 - 18 x 2 - 32 x 3	104	25	52	87.19.321
32 x 3 - 20 x 2 - 32 x 3	104	25	52	87.19.322
32 x 3 - 20 x 2,5 - 32 x 3	104	25	52	87.19.323
32 x 3 - 25 x 2,5 - 32 x 3	104	25	52	87.19.324
32 x 3 - 26 x 3 - 32 x 3	104	25	52	87.19.326
40 x 3,5 - 25 x 2,5 - 40 x 3,5	112	25	56	87.19.401
40 x 3,5 - 26 x 3 - 40 x 3,5	112	25	56	87.19.402
40 x 3,5 - 32 x 3 - 40 x 3,5	112	25	56	87.19.403
50 x 4 - 26 x 3 - 50 x 4	152	40	76	87.19.500
50 x 4 - 32 x 3 - 50 x 4	152	40	76	87.19.501
50 x 4 - 40 x 3,5 - 50 x 4	152	40	76	87.19.502

87.19



TEE REDUCED MIDDLE SECTION



Size in mm	L	LI	H	Code
16 x 2 - 14 x 2 - 14 x 2	90	25	45	87.20.160
18 x 2 - 16 x 2 - 16 x 2	90	25	45	87.20.181
20 x 2 - 16 x 2 - 16 x 2	90	25	45	87.20.202
20 x 2 - 18 x 2 - 18 x 2	90	25	45	87.20.203
20 x 2 - 16 x 2 - 18 x 2	90	25	45	87.20.204
20 x 2 - 20 x 2 - 14 x 2	90	25	45	87.20.205
20 x 2 - 20 x 2 - 16 x 2	90	25	45	87.20.206
20 x 2,5 - 16 x 2 - 16 x 2	90	25	45	87.20.209
20 x 2,5 - 16 x 2,25 - 16 x 2,25	90	25	45	87.20.210
25 x 2,5 - 16 x 2 - 20 x 2	96	25	48	87.20.250
25 x 2,5 - 20 x 2 - 16 x 2	96	25	48	87.20.251
25 x 2,5 - 20 x 2 - 20 x 2	96	25	48	87.20.252
25 x 2,5 - 25 x 2,5 - 16 x 2	96	25	48	87.20.253
25 x 2,5 - 25 x 2,5 - 20 x 2	96	25	48	87.20.254
26 x 3 - 16 x 2 - 20 x 2	96	25	48	87.20.260
26 x 3 - 18 x 2 - 18 x 2	96	25	48	87.20.262
26 x 3 - 20 x 2 - 16 x 2	96	25	48	87.20.264
26 x 3 - 20 x 2 - 20 x 2	96	25	48	87.20.265
26 x 3 - 20 x 2,5 - 20 x 2,5	96	25	48	87.20.267
26 x 3 - 26 x 3 - 20 x 2,5	96	25	48	87.20.268
26 x 3 - 26 x 3 - 16 x 2	96	25	48	87.20.269
26 x 3 - 26 x 3 - 20 x 2	96	25	48	87.20.270
32 x 3 - 20 x 2 - 26 x 3	104	25	52	87.20.320
32 x 3 - 20 x 2,5 - 26 x 3	104	25	52	87.20.321
32 x 3 - 25 x 2,5 - 25 x 2,5	104	25	52	87.20.323
32 x 3 - 26 x 3 - 26 x 3	104	25	52	87.20.325
32 x 3 - 32 x 3 - 20 x 2	104	25	52	87.20.326
32 x 3 - 32 x 3 - 26 x 3	104	25	52	87.20.329
40 x 3,5 - 32 x 3 - 32 x 3	112	25	56	87.20.400
40 x 3,5 - 26 x 3 - 32 x 3	112	25	56	87.20.403
40 x 3,5 - 40 x 3,5 - 26 x 3	112	25	56	87.20.404
40 x 3,5 - 40 x 3,5 - 32 x 3	112	25	56	87.20.405
50 x 4 - 40 x 3,5 - 40 x 3,5	139	40	76	87.20.500
50 x 4 - 32 x 3 - 40 x 3,5	139	40	76	87.20.501
50 x 4 - 50 x 4 - 32 x 3	139	40	76	87.20.502
50 x 4 - 50 x 4 - 40 x 3,5	139	40	76	87.20.503

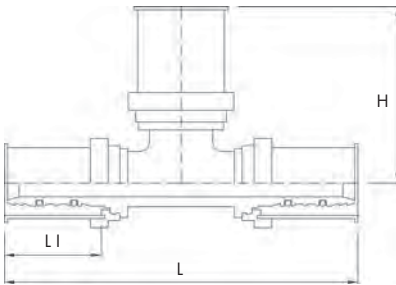
87.20



REDUCED TEE COUPLING



DIMENSIONS

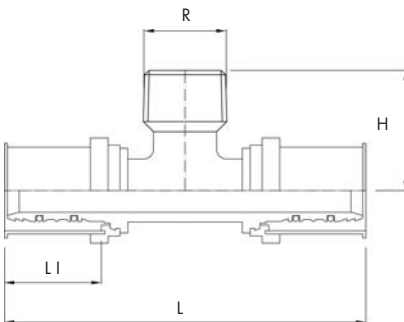


Size in mm	L	LI	H	Code
14 x 2 - 16 x 2 - 14 x 2	90	25	45	87.21.140
16 x 2 - 18 x 2 - 16 x 2	90	25	45	87.21.160
16 x 2 - 20 x 2 - 16 x 2	90	25	45	87.21.161
16 x 2 - 20 x 2,5 - 16 x 2	90	25	45	87.21.162
16 x 2,25 - 20 x 2,5 - 16 x 2,25	90	25	45	87.21.163
20 x 2 - 25 x 2,5 - 20 x 2	96	25	48	87.21.200
20 x 2 - 26 x 3 - 20 x 2	96	25	48	87.21.201
20 x 2,5 - 26 x 3 - 20 x 2,5	96	25	48	87.21.202
25 x 2,5 - 32 x 3 - 25 x 2,5	104	25	52	87.21.250
26 x 3 - 32 x 3 - 26 x 3	104	25	52	87.21.260

87.21



TEE ENLARGED MIDDLE SECTION

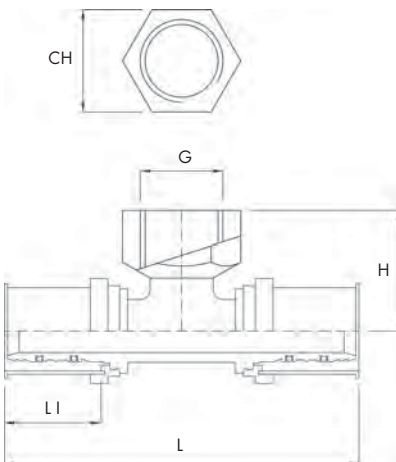


Size in mm	L	LI	H	R	Code
16 x 2 - 1/2" - 16 x 2	92	25	29	1/2"	87.22.160
16 x 2,25 - 1/2" - 16 x 2,25	92	25	29	1/2"	87.22.161
18 x 2 - 1/2" - 18 x 2	92	25	32	1/2"	87.22.180
20 x 2 - 1/2" - 20 x 2	92	25	32	1/2"	87.22.200
20 x 2 - 3/4" - 20 x 2	98	25	36	3/4"	87.22.201
20 x 2,5 - 1/2" - 20 x 2,5	92	25	32	1/2"	87.22.202
25 x 2,5 - 3/4" - 25 x 2,5	98	25	36	3/4"	87.22.251
25 x 2,5 - 1" - 25 x 2,5	104	25	40	1"	87.22.252
26 x 3 - 1/2" - 26 x 3	98	25	33	1/2"	87.22.260
26 x 3 - 3/4" - 26 x 3	98	25	36	3/4"	87.22.261
26 x 3 - 1" - 26 x 3	104	25	40	1"	87.22.262
32 x 3 - 3/4" - 32 x 3	104	25	38	3/4"	87.22.320
32 x 3 - 1" - 32 x 3	104	25	40	1"	87.22.321
40 x 3,5 - 1" - 40 x 3,5	112	25	45	1"	87.22.400
50 x 4 - 1 1/4" - 50 x 4	152	40	61	1 1/4"	87.22.500
50 x 4 - 1 1/2" - 50 x 4	152	40	61	1 1/2"	87.22.501

87.22



MALE TEE COUPLING



Size in mm	L	LI	H	G	CH	Code
116 x 2 - 1/2" - 16 x 2	92	25	33	1/2"	25	87.23.160
16 x 2,25 - 1/2" - 16 x 2,25	92	25	33	1/2"	25	87.23.161
18 x 2 - 1/2" - 18 x 2	92	25	35	1/2"	25	87.23.180
18 x 2 - 3/4" - 18 x 2	98	25	42	3/4"	31	87.23.181
20 x 2 - 1/2" - 20 x 2	92	25	35	1/2"	25	87.23.200
20 x 2 - 3/4" - 20 x 2	98	25	42	3/4"	31	87.23.201
20 x 2,5 - 1/2" - 20 x 2,5	92	25	35	1/2"	25	87.23.202
20 x 2,5 - 3/4" - 20 x 2,5	98	25	42	3/4"	31	87.23.203
25 x 2,5 - 1/2" - 25 x 2,5	92	25	35	1/2"	25	87.23.250
25 x 2,5 - 3/4" - 25 x 2,5	98	25	42	3/4"	31	87.23.252
26 x 3 - 1/2" - 26 x 3	94	25	37	1/2"	25	87.23.260
26 x 3 - 1/2" - 20 x 2	94	25	37	1/2"	25	87.23.261
26 x 3 - 3/4" - 26 x 3	98	25	42	3/4"	31	87.23.263
32 x 3 - 1/2" - 32 x 3	104	25	45	1/2"	38	87.23.320
32 x 3 - 3/4" - 32 x 3	104	25	45	1/2"	38	87.23.321
32 x 3 - 1" - 32 x 3	104	25	45	1/2"	38	87.23.322
32 x 3 - 1 1/4" - 32 x 3	112	25	55	1 1/4"	47	87.23.323
40 x 3,5 - 1" - 40 x 3,5	112	25	55	1 1/4"	47	87.23.400
40 x 3,5 - 1 1/4" - 40 x 3,5	112	25	55	1 1/4"	47	87.23.401
50 x 4 - 1 1/4" - 50 x 4	152	40	63	1 1/4"	\	87.23.500
50 x 4 - 1 1/2" - 50 x 4	152	40	63	1 1/2"	\	87.23.501
63 x 6 - 1" - 63 x 6	156	37	59	1"	\	87.23.631
63 x 6 - 1 1/2" - 63 x 6	156	37	59	1 1/2"	\	87.23.632

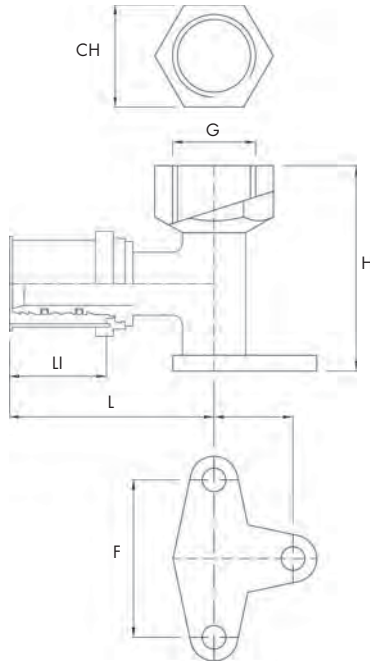
87.23



FEMALE TEE COUPLING



DIMENSIONS



Misure mm	L	LI	H	G	CH	F	Codice
14 x 2 - 1/2"	52	25	52	1/2"	26	40	87.24.140
16 x 2 - 3/8"	47	25	39	3/8"	25	40	87.24.145
16 x 2,25 - 1/2"	47	25	39	1/2"	25	40	87.24.159
16 x 2 - 1/2"	47	25	39	1/2"	25	40	87.24.160
16 x 2 - 1/2"	52	25	52	1/2"	26	40	87.24.161
18 x 2 - 1/2"	52	25	52	1/2"	26	40	87.24.180
20 x 2 - 1/2"	52	25	52	1/2"	26	40	87.24.200
20 x 2 - 3/4"	52	25	52	3/4"	30	40	87.24.201
20 x 2,5 - 1/2"	52	25	52	1/2"	26	40	87.24.202
20 x 2,5 - 3/4"	52	25	52	3/4"	30	40	87.24.203
25 x 2,5 - 3/4"	52	25	52	3/4"	30	40	87.24.250
26 x 3 - 3/4"	52	25	52	3/4"	30	40	87.24.260

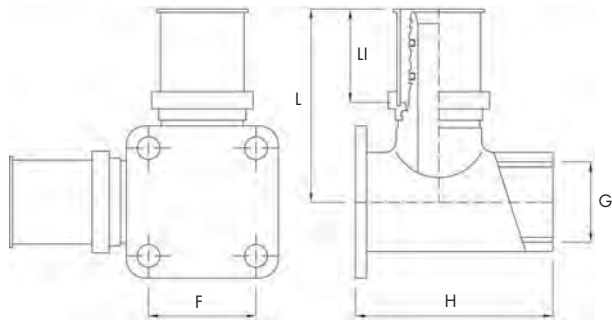
87.24



WALLPLATE FEMALE
ELBOW COUPLING

Misure mm	L	LI	H	G	F	Codice
16 x 2 - 1/2" - 16 x 2	51	25	52	1/2"	28	87.25.160
16 x 2,25 - 1/2" - 16 x 2,25	51	25	52	1/2"	28	87.25.161
18 x 2 - 1/2" - 18 x 2	51	25	52	1/2"	28	87.25.180
20 x 2 - 1/2" - 20 x 2	51	25	52	1/2"	28	87.25.200

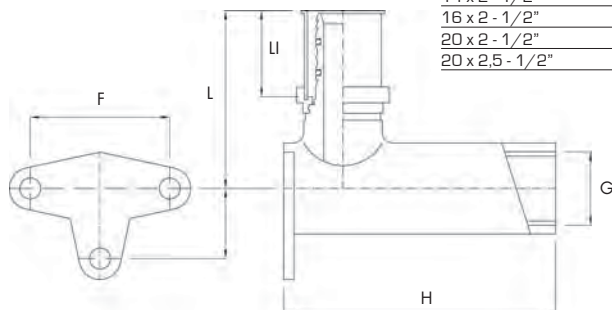
87.25



DOUBLE SHORT
WALLPLATE FEMALE
COUPLING

Misure mm	L	LI	H	G	F	Codice
14 x 2 - 1/2"	51	25	78	1/2"	40	87.26.140
16 x 2 - 1/2"	51	25	78	1/2"	40	87.26.160
20 x 2 - 1/2"	51	25	78	1/2"	40	87.26.200
20 x 2,5 - 1/2"	51	25	78	1/2"	40	87.26.201

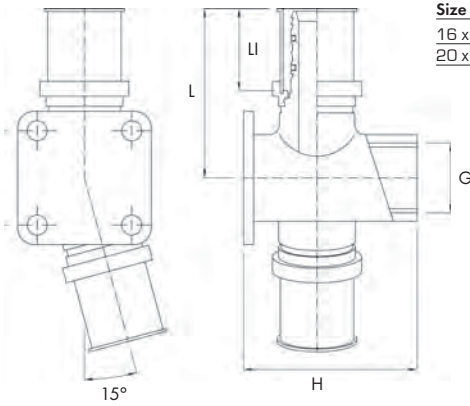
87.26



DOUBLE SHORT
WALLPLATE FEMALE
COUPLING



DIMENSIONS

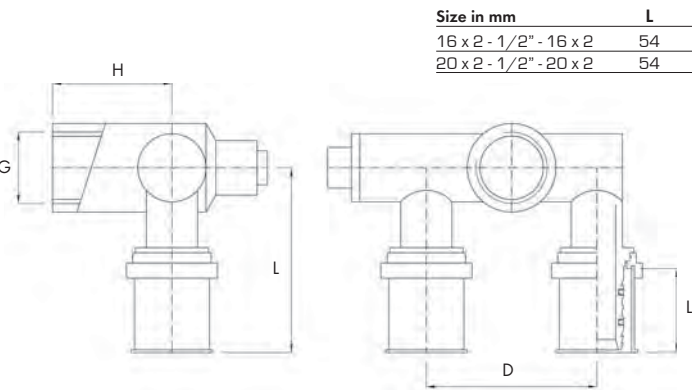


Size in mm	L	LI	H	G	Code	
16 x 2 - 1/2" F - 16 x 2	h 52 mm	51	25	52	1/2"	87.26.205
20 x 2 - 1/2" F - 20 x 2	h 52 mm	51	25	52	1/2"	87.26.210

87.26



WALLPLATE ELBOW
FOR SERIES
CONNECTIONS

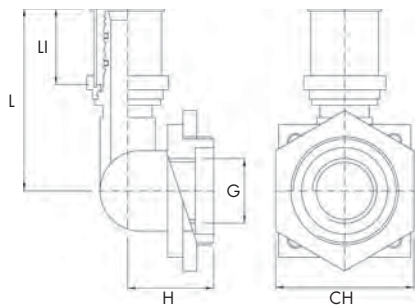


Size in mm	L	LI	H	G	D	Code
16 x 2 - 1/2" - 16 x 2	54	25	35	1/2"	50	87.27.160
20 x 2 - 1/2" - 20 x 2	54	25	35	1/2"	50	87.27.200

87.27



U-SHAPED WALL
COUPLING

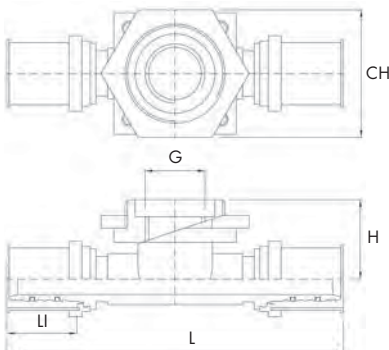


Size in mm	L	LI	H	G	CH	Code
16 x 2 - 1/2"	59	25	28	1/2"	45	87.28.160
18 x 2 - 1/2"	59	25	28	1/2"	45	87.28.180
20 x 2 - 1/2"	59	25	28	1/2"	45	87.28.200

87.28



ELBOW COUPLING
FOR WC CISTERN



Size in mm	L	LI	H	G	CH	Code
16 x 2 - 1/2" - 16 x 2	118	25	28	1/2"	45	87.29.160
20 x 2 - 1/2" - 20 x 2	118	25	28	1/2"	45	87.29.200

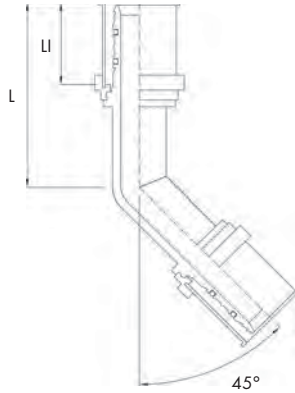
87.29



T-SHAPED ELBOW
COUPLING
FOR WC CISTERN



DIMENSIONS

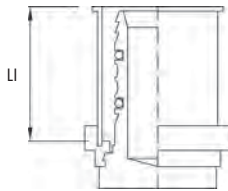


Size in mm	L	LI	Code
25 x 2,5	56	25	87.30.250
26 x 3	56	25	87.30.260
32 x 3	56	25	87.30.320
40 x 3,5	56	25	87.30.400
50 x 4	77	40	87.30.500

87.30



45° ELBOW

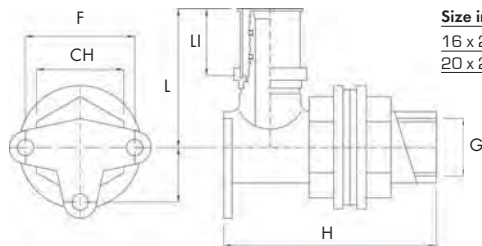


Size in mm	LI	Code
14 x 2	25	87.31.140
16 x 2	25	87.31.160
18 x 2	25	87.31.180
20 x 2	25	87.31.200
25 x 2,5	25	87.31.250
26 x 3	25	87.31.260
32 x 3	25	87.31.320
40 x 3,5	25	87.31.400
50 x 4	40	87.31.500

87.31



PRESSURE
BLIND PLUGS

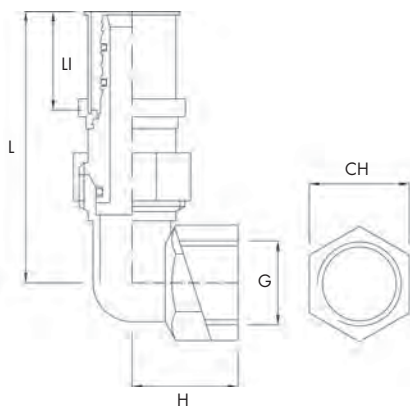


Size in mm	L	LI	H	G	CH	F	Code
16 x 2	51	25	78	1/2	30	40	87.33.105
20 x 2	51	25	78	1/2	30	40	87.33.115

87.33



3/4" M x 1/2" F
FLANGED ELBOW
FOR WC CISTERN



Size in mm	L	LI	H	G	CH	Code
16 x 2 - 1/2"	68	25	27	1/2"	25	87.35.160
18 x 2 - 1/2"	68	25	27	1/2"	25	87.35.180
20 x 2 - 1/2"	68	25	27	1/2"	25	87.35.200
20 x 2 - 3/4"	68	25	30	3/4"	31	87.35.201

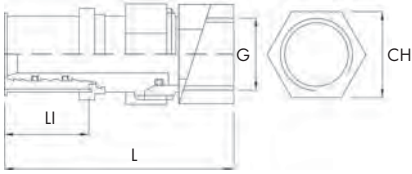
87.35



90° FEMALE
ELBOW FITTING



DIMENSIONS

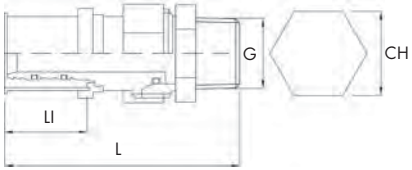


Size in mm	L	LI	G	CH	Code
16 x 2 - 1/2"	67	25	1/2"	26	87.36.160
16 x 2 - 3/4"	72	25	3/4"	31	87.36.161
20 x 2 - 1/2"	67	25	1/2"	26	87.36.200
20 x 2 - 3/4"	72	25	3/4"	31	87.36.201
26 x 3 - 3/4"	73	25	3/4"	38	87.36.260
26 x 3 - 1"	73	25	1"	38	87.36.261
32 x 3 - 1"	86	25	1"	38	87.36.320

87.36



FEMALE FITTING WITH FLAT SEAL

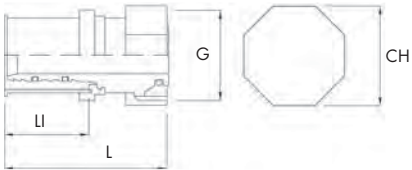


Size in mm	L	LI	G	CH	Code
16 x 2 - 1/2"	73	25	1/2"	26	87.37.160
16 x 2 - 3/4"	74	25	3/4"	27	87.37.161
20 x 2 - 1/2"	73	25	1/2"	26	87.37.200
20 x 2 - 3/4"	74	25	3/4"	27	87.37.201
26 x 3 - 3/4"	67	25	3/4"	33	87.37.260
26 x 3 - 1"	71	25	1"	33	87.37.261
32 x 3 - 1"	85	25	1"	33	87.37.320

87.37



MALE FITTING WITH CONICAL SEAL



Size in mm	L	LI	G	CH	Codice
16 x 2 - 3/4"	48	25	3/4"	30	87.39.160
18 x 2 - 3/4"	48	25	3/4"	30	87.39.180
20 x 2 - 3/4"	48	25	3/4"	30	87.39.200
26 x 3 - 1"	44	25	1"		87.39.260
25 x 2,5 - 1"	44	25	1"		87.39.261

87.39



FITTING WITH YELLOW EUROKONO SEAL



Misure mm	L	LI	G	CH	Code
16 x 2 - 3/4"	48	25	34	30	87.40.160
20 x 2 - 3/4"	48	25	34	30	87.40.200

87.40



FITTING NICKEL-PLATED EUROKONO SEAL



Size in mm	L	LI	G	CH	Code
16 x 2 - 1/2"	52	25	1/2"	24	87.42.150
16 x 2 - 3/4"	48	25	3/4"	30	87.42.160
18 x 2 - 3/4"	48	25	3/4"	30	87.42.180
20 x 2 - 3/4"	48	25	3/4"	30	87.42.200
26 x 3 - 1"	45	25	1"	37	87.42.260

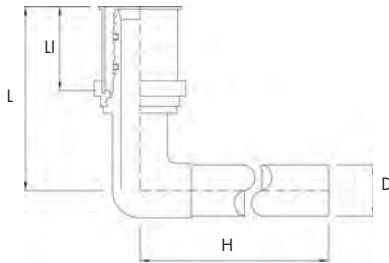
87.42



FITTING WITH FLAT SEAL



DIMENSIONS

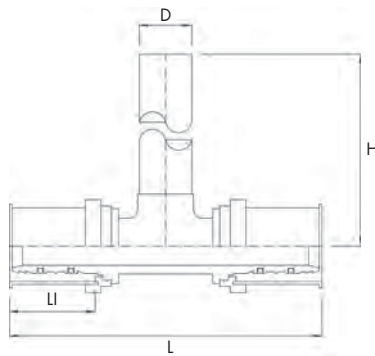


Size in mm	L	LI	H	D	Code
14 x 2 - 15 mm - 300 mm	45	25	300	15	87.45.140
16 x 2 - 15 mm - 300 mm	45	25	300	15	87.45.160
16 x 2 - 15 mm - 1100 mm	45	25	1100	15	87.45.161
18 x 2 - 15 mm - 300 mm	45	25	300	15	87.45.180
18 x 2 - 15 mm - 1100 mm	45	25	1100	15	87.45.181
20 x 2 - 15 mm - 300 mm	45	25	300	15	87.45.200
20 x 2 - 15 mm - 1100 mm	45	25	1100	15	87.45.201

87.45



ELBOW CONNECTOR FOR RADIATORS NP

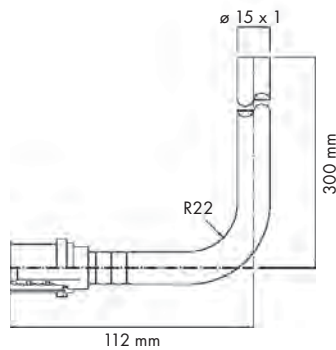


Size in mm	L	LI	H	D	Code
14 x 2 - 15 mm - 300 mm	90	25	300	15	87.46.140
14 x 2 - 15 mm - 1100 mm	90	25	1100	15	87.46.141
16 x 2 - 15 mm - 300 mm	90	25	300	15	87.46.160
16 x 2 - 15 mm - 1100 mm	90	25	1100	15	87.46.161
18 x 2 - 15 mm - 300 mm	90	25	300	15	87.46.180
18 x 2 - 15 mm - 1100 mm	90	25	1100	15	87.46.181
20 x 2 - 15 mm - 300 mm	90	25	300	15	87.46.200
20 x 2 - 15 mm - 1100 mm	90	25	1100	15	87.46.201

87.46



TEE CONNECTOR FOR RADIATORS NP

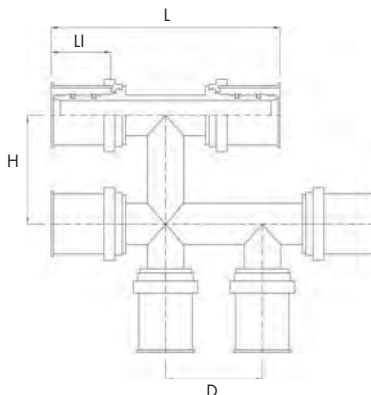


Size in mm	Code
18 x 2 - 15 mm	87.45.185

87.45



ELBOW CONNECTOR FOR RADIATORS WITH COPPER PIPE



Size in mm	L	LI	H	D	Code
16 x 16 x 16	95	25	40	40	87.49.010
20 x 16 x 16	95	25	40	40	87.49.015
20 x 16 x 20	95	25	40	40	87.49.020
20 x 20 x 20	95	25	40	40	87.49.025

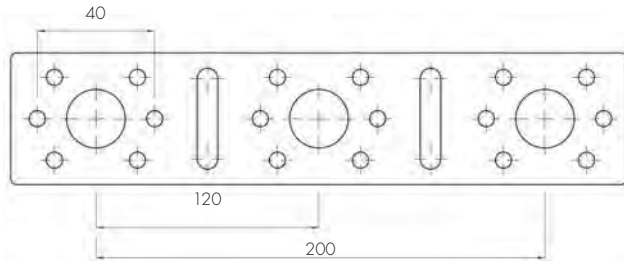
87.49



T BYPASS

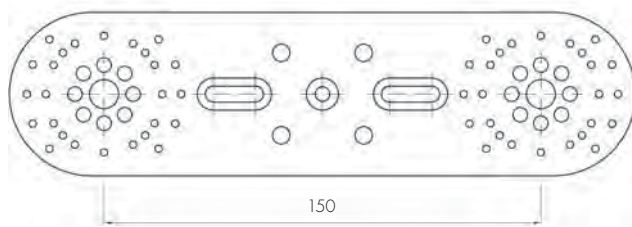


DIMENSIONS



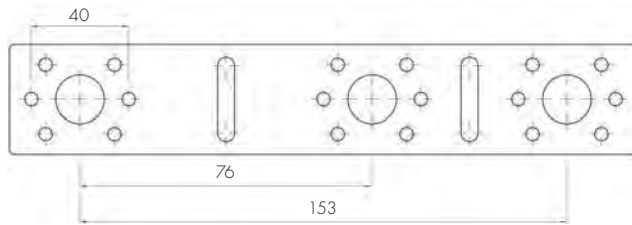
87.49.600

ZINC-PLATED SHEET
FIXING PLATE COMPLETE
WITH 4 SCREWS



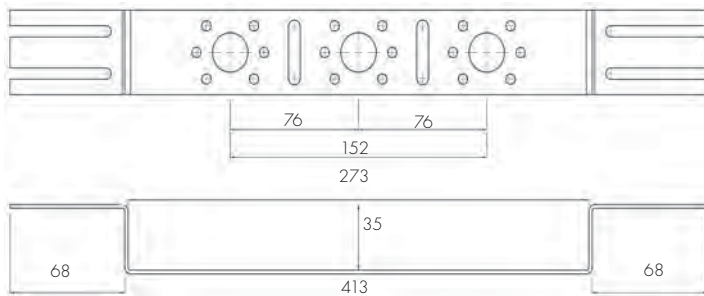
87.49.601

WHITE PLASTIC SHEET
FIXING PLATE COMPLETE
WITH 4 SCREWS



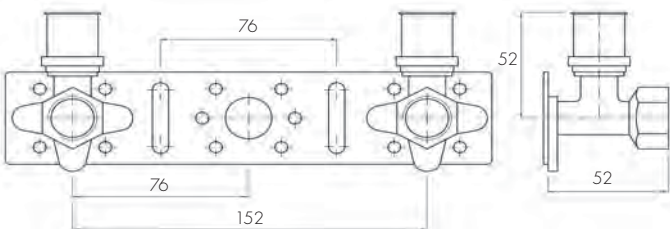
87.49.605

ZINC-PLATED SHEET
FIXING PLATE COMPLETE
WITH 4 SCREWS



87.49.610

ZINC-PLATED SHEET
BUILT-IN FIXING PLATE
FOR WALL-MOUNTING
H 39 mm

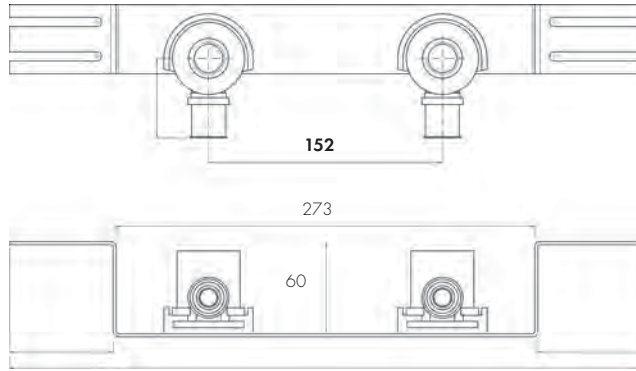


87.54.005

PLATE KIT WITH 2
FEMALE ELBOW JOINTS
MOUNTED FLANGED 16
X 1/2" H 52 mm

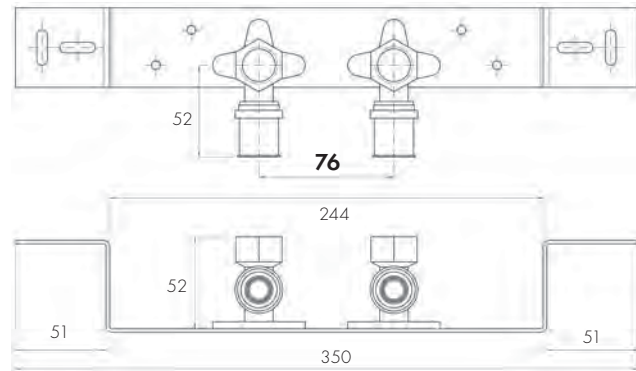


DIMENSIONS



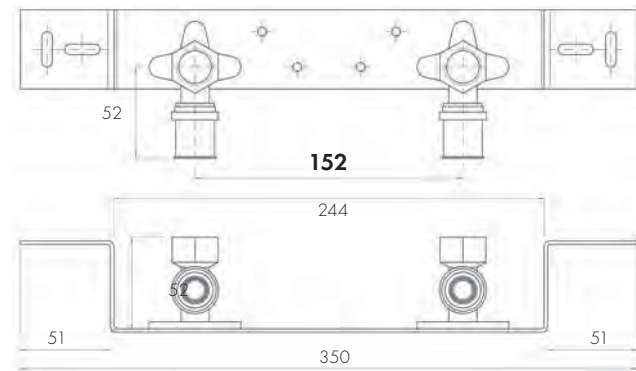
87.54.030

PLATE KIT
WITH 2 MOUNTED
INSULATED WALL
COUPLINGS
16 x 1" H 52 mm



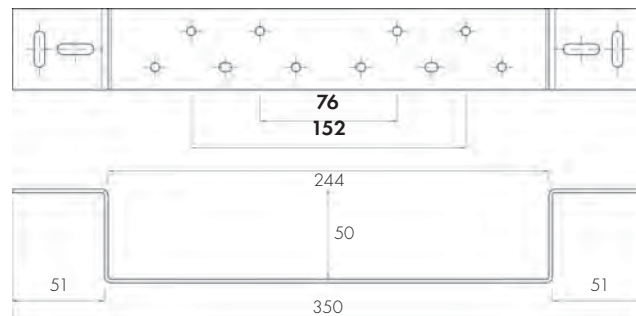
87.54.060

SANITARY PLATE
MOUNTED WITH 2
FLANGED FEMALE EL-
BOW COUPLINGS
1/2" F 16 x 2 PITCH
76 mm



87.54.065

SANITARY PLATE
MOUNTED
WITH 2 FLANGED
FEMALE ELBOW
COUPLINGS
1/2" F 16 x 2 PITCH
152 mm



87.54.075

SANITARY PLATE
75 - 152 mm PITCH
COMPLETE WITH
6 SCREWS
+ 6 MOUNTING NUTS



LAYING INSTRUCTIONS



Cutting

Cut to the end of the pipe intended to be fitted to the desired length using a special tool.



Calibrating

Fit the calibrating device of the suitable size into the pipe. Rotate the device pressing it slightly in such a manner to obtain the end of the pipe free of residual burrs after cutting and with an initial bevel that will allow the fitting to be easily inserted into the pipe. Furthermore, the calibrated part of the pipe shall have a constant and ideal diameter to suit the fitting.

WARNING: proper calibration of the pipe is of key importance for a proper implementation of the system. For such purpose, strictly use chip removal calibrators. Calibrators for PEX pipe are not suitable.



Insertion-Mounting

Inserting the fitting: Apply suitable pressure to insert the fitting into the pipe. Check whether the elements are positioned in an ideal manner: the three inspection holes of the stainless steel collar must reveal the presence of the white pipe.

WARNING: Do not apply any type of abrasive paste, adhesive or lubricant onto the joint otherwise the joint would be jeopardised.



Pressing

Tightening the joint: Use suitable pressing device, provided with a suitable clamp in terms of size and type of fitting, close the obtained joint until the clamp is entirely tightened.



Check

Check whether the fitting is pressed properly.

Quick to install

Comisa Press Evo fittings are perfectly installable within a few operations that may be performed even by non-skilled personnel. All that is required is to follow our instructions and have the required tools. Hence, both saving time and results are guaranteed.

Practical use

Our fittings are instantly ready for installation without requiring of the plumber to perform any mounting operations. The packaged fittings come already entirely pre-mounted. The plastic clip that implements the collar ensured proper positioning of the TH tightening clamp. The few operations required for installing, the wide range of drawings and the measurements provided ensure the practicality of the **Comisa Press Evo** fittings in use.

Entirely safe

The Press Control system the Comisa Press Evo fittings are provided with allows identifying possible unpressed joints. During the step of testing the system, with test pressure up to 4.5 bars, the Comisa Press Evo fittings allow immediate leakage hence identification of the fitting requiring attention. Comisa Press Evo fittings are the sole ones to have obtained the approval of this characteristic by the DVGW (the German Technical Association for Gas and Water).

Versatile

Comisa has developed its own Evo series fittings for coupling with TH clamps. However, **Comisa Press Evo** fittings may also be pressed using other profiles, whose compatibility therewith has been tested.

CLAMP COMPATIBILITY

The DVGW N. DW-8501BO0049 certified Comisa Press Evo system is made up of:

- **Comisa Press Evo fittings**
- **COMISA multilayer pipe**
- **TH-profile clamp**

Comisa guarantees the compatibility of **B** or **H**-profile clamps, for some specific diameters, solely if used with Comisa Evo Press system that conceived to use the abovementioned components.

Profile of clamps to be used with Comisa Press EVO fittings

TH
14
16
18
20
25
26
32
40
50
63



Compatibility with H-B clamps

H	B
14	14
16	16
18	18
20	20
26	26
32	32



COMISA S.P.A.
25055 PISOONE (BS) - ITALY
LOCALITÀ NEZIOLE - ZONA ARTIGIANALE, 27
TEL. + 39 0364.896811 - FAX +39 0364.896825 - www.comisa.it

